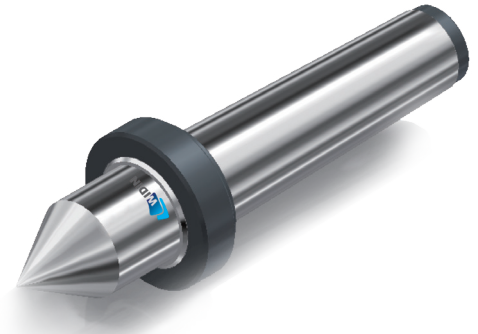
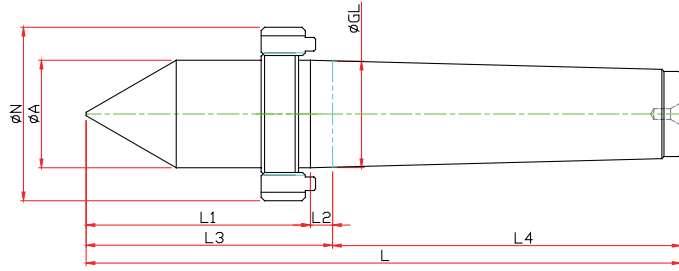


# LM-AN TYPE

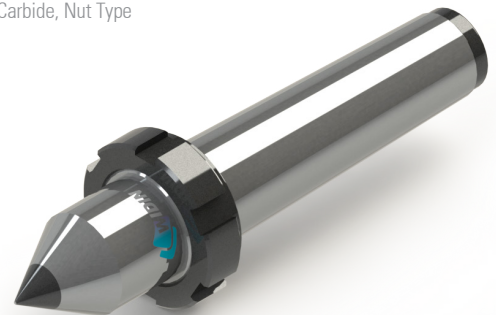
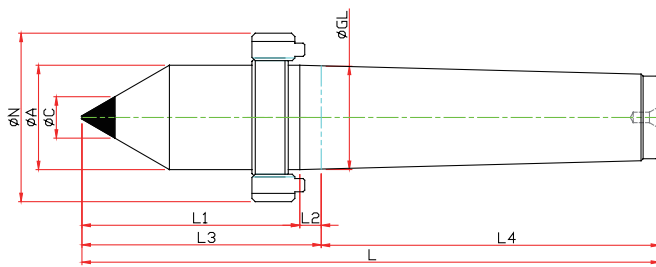
※ 너트타입 Nut Type



Model	Order Number	Morse Taper	Dimension								Run Out
			GL	A	L1	L2	L3	L4	N	L	
LM-1AN	110011	NO.1	12,065	12.2	31.5	5	36.5	53.5	M16	90	0.003
LM-2AN	110012	NO.2	17,780	18	41.5	6.5	48	64	M22	112	0.003
LM-3AN	110013	NO.3	23,825	24	49.5	7.5	57	81	M27	138	0.003
LM-4AN	110014	NO.4	31,267	31.6	62.5	10	72.5	102.5	M36	175	0.003
LM-5AN	110015	NO.5	44,399	44.7	77	11	88	129.6	M48	217.5	0.003
LM-6AN	110016	NO.6	63,348	63.8	96.5	11.5	108	182	M68	290	0.005
LM-7AN	110017	NO.7	83,058	83.6	108.5	11.5	120	250	M90	370	0.005

# LM-CN TYPE

※ 초경타입, 너트타입 Carbide, Nut Type



Model	Order Number	Morse Taper	Dimension									Run Out
			GL	A	L1	L2	L3	L4	C	N	L	
LM-1CN	110111	NO.1	12,065	12	31.5	5	36.5	53.5	7	M16	90	0.003
LM-2CN	110112	NO.2	17,780	18	41.5	6.5	48	64	7	M22	112	0.003
LM-3CN	110113	NO.3	23,825	24	49.5	7.5	57	81	10	M27	138	0.003
LM-4CN	110114	NO.4	31,267	32	62.5	10	72.5	102.5	14	M36	175	0.003
LM-5CN	110115	NO.5	44,399	45	77	11	88	129.5	18	M48	217.5	0.003
LM-6CN	110116	NO.6	63,348	64	96.5	11.5	108	182	18	M68	290	0.005

# LM SPECIAL

※ 사용자의 조건에 따라 주문. 제작 Customized-special production for user's condition

